

EzRay Air w



WEIGHT INNOVATION

WALL-MOUNTED INTRAORAL X-RAY



WEIGHT INNOVATION WITH CNT (CARBON NANO TECHNOLOGY)

Wall mounted EzRay Air is a lightweight X-ray device designed for easy handling and stable positioning for optimal image quality on your intra-oral X-rays.

The EzRay Air's lightweight tube head provides users with a stable and easy to use X-ray source which maximizes image clarity and optimizes work-flow.

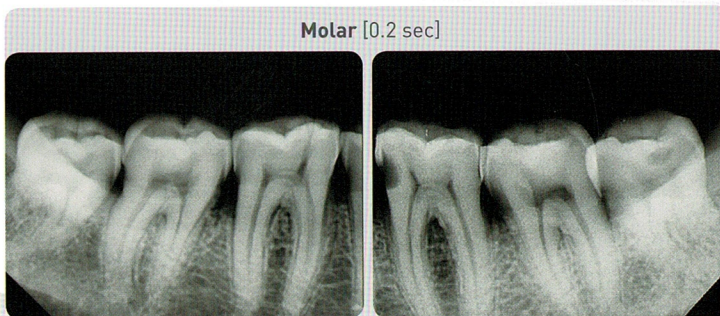


SMART DIAL FOR ALL FUNCTIONS

The operating panel located on the tube head creates a much simpler and much faster work-flow. Using the Smart dial, practitioners will notice a decrease in preparation time and there would be no need to remember complicated control buttons and configurations.

SECURE CLEAR IMAGES WITH A 0.4MM FOCAL SPOT

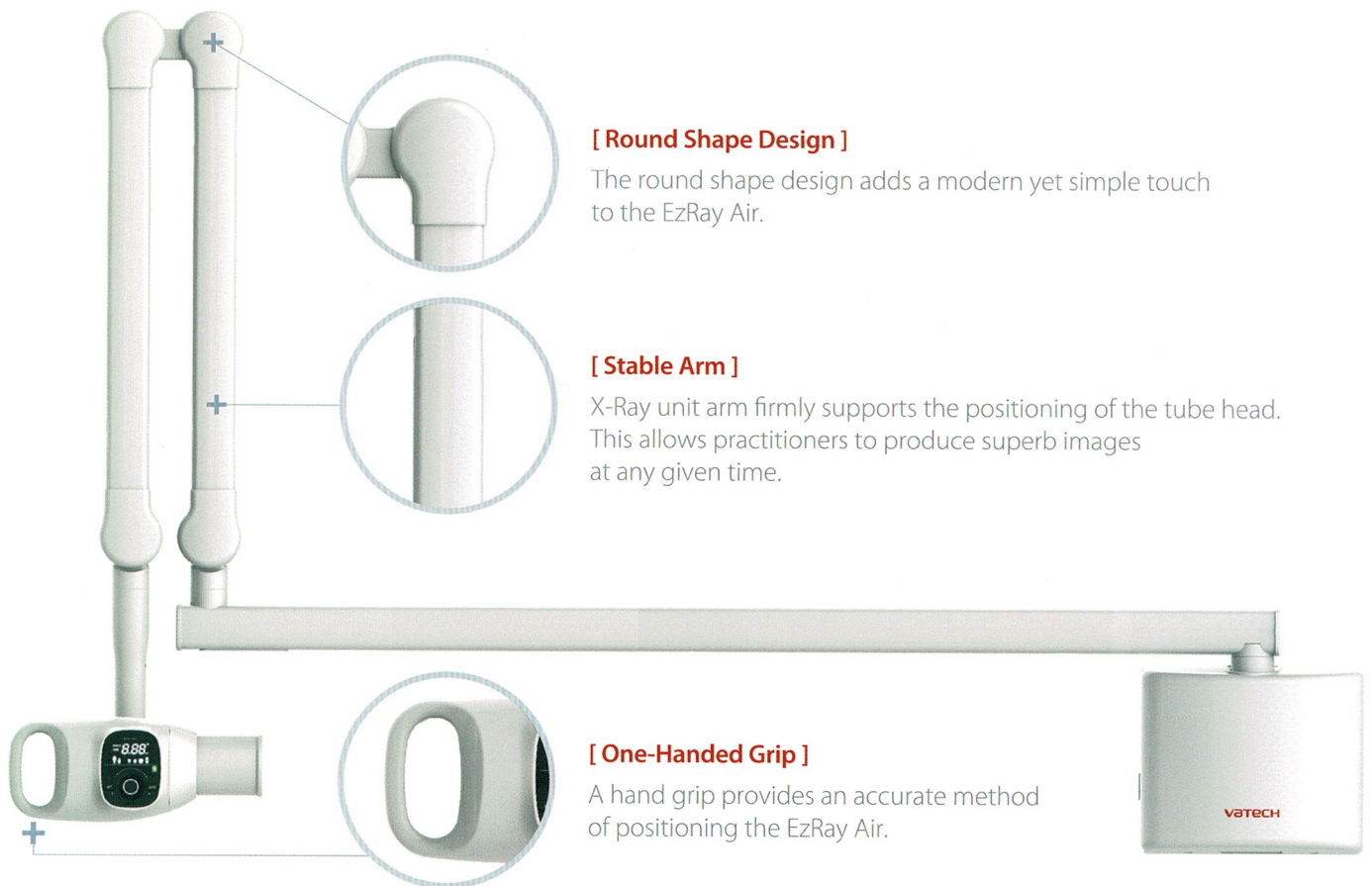
Compared to other intraoral sensors in the market, the EzRay Air provides optimal image quality and additional diagnostic value with a 0.4mm focal spot.



* Exposure Condition : 65kV, 3.0mA



 **ERGONOMIC DESIGN**



[Round Shape Design]

The round shape design adds a modern yet simple touch to the EzRay Air.

[Stable Arm]

X-Ray unit arm firmly supports the positioning of the tube head. This allows practitioners to produce superb images at any given time.

[One-Handed Grip]

A hand grip provides an accurate method of positioning the EzRay Air.



SPECIFICATIONS [EzRay Air W : VEX-S300W]

Focal Spot	0.4 mm (IEC 60336)
Tube Voltage	65 kV
Tube Current	3.0 mA
Exposure Time Range	0.05 ~ 0.5 (0.01s increment)
Source to Skin Distance	Min. 7.9 inch
X-ray Field	Default: : 60 mm Round, 30x40 mm Rectangular / Optional: 20x30 mm Rectangular
Arm Length [Option]	62"/ 68"/ 80" *See note A
Accessories	Remote Exposure Switch (Hand Switch / Doorbell Switch)
Weight	56.9 lb (Arm Length 62")
	58.0 lb (Arm Length 68")
	61.1 lb (Arm Length 80")

* The specifications are subject to change without prior notice.

DIMENSIONS [Unit: inch]

